



ASKING PRICE

£199,950



THE DETAILS



1



1



1



Apartment 53, Queens Apartments
Queens Promenade, Douglas
£199,950

call in today or visit www.blackgracecowley.com for more details

e: hello@blackgracecowley.com | w: blackgracecowley.com | t: +44 (0) 1624 645555

a: 51 Victoria Street, DOUGLAS, Isle of Man, IM1 2LD

Apartment 53, Queens Apartments, Queens Promenade, Douglas



Apartment 53, Queens Apartments, Queens Promenade, Douglas



Apartment 53, Queens Apartments, Queens Promenade, Douglas





PROPERTY DETAILS FOR

Apartment 53, Queens Apartments, Queens Promenade, Douglas

THE DESCRIPTION

- Purpose built second floor apartment in Queens Apartments
- Panoramic sea views across Douglas Bay
- 1 double Bedroom, Bathroom
- Open plan Lounge/Dining Room/Kitchen with balcony
- 1 allocated parking space
- No onward chain

THE PROPERTY

Black Grace Cowley are delighted to offer Apartment 53 Queens Apartments to the market. This purpose built apartment is located on the second floor, communal entrance hall with security entry phone and lift and stair access. Private entrance into the apartment. Open plan Lounge/Dining Room/ Kitchen, balcony with panoramic sea views across Douglas Bay. 1 Double Bedroom with large bathroom. 1 allocated parking space. The property is offered for sale with no onward chain.

975yrs remaining on leasehold. Active management company in place. Service charge: £1520.00 per annum. Ground Rent: £10.00 per annum.

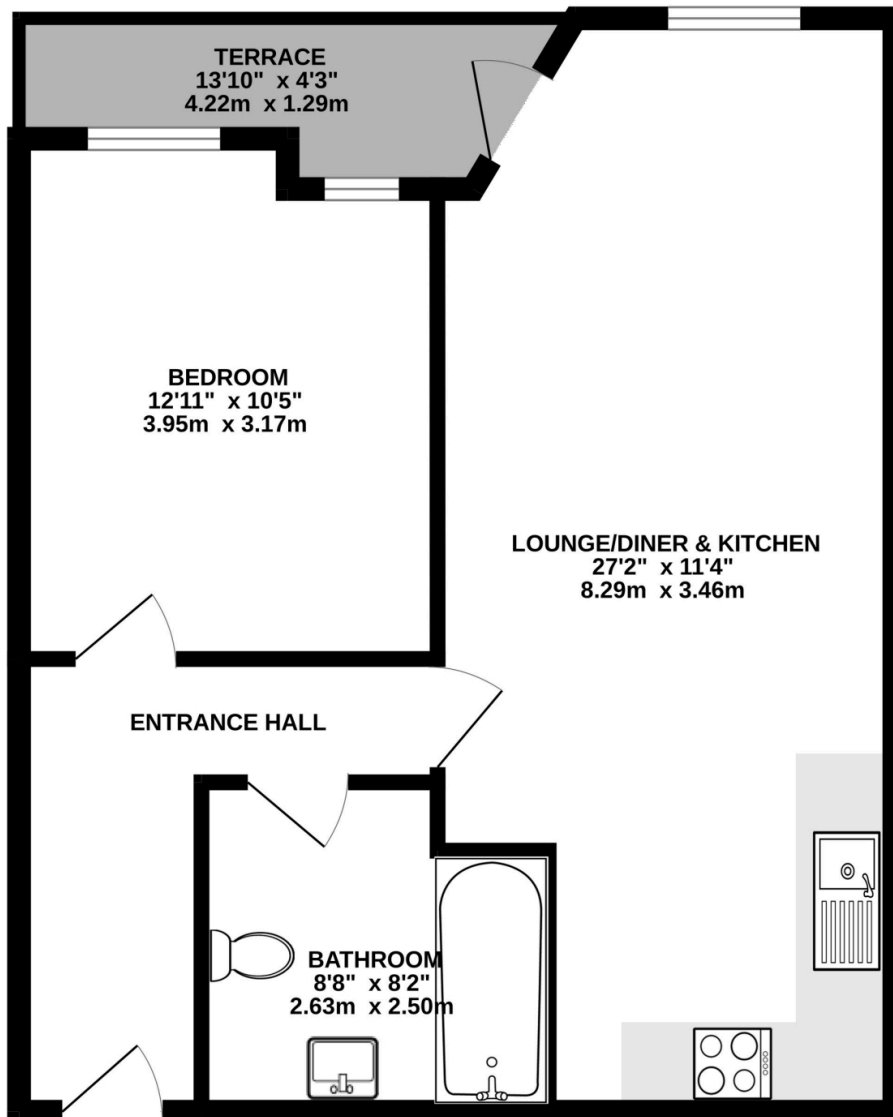
e: hello@blackgracecowley.com | **w:** blackgracecowley.com | **t:** +44 (0) 1624 645555

a: 51 Victoria Street, DOUGLAS, Isle of Man, IM1 2LD

Apartment 53, Queens Apartments, Queens Promenade, Douglas

FLOORPLAN

GROUND FLOOR
547 sq.ft. (50.8 sq.m.) approx.



TOTAL FLOOR AREA : 547 sq.ft. (50.8 sq.m.) approx.

Whilst every attempt has been made to ensure the accuracy of the floorplan contained here, measurements of doors, windows, rooms and any other items are approximate and no responsibility is taken for any error, omission or mis-statement. This plan is for illustrative purposes only and should be used as such by any prospective purchaser. The services, systems and appliances shown have not been tested and no guarantee as to their operability or efficiency can be given.
Made with Metropix ©2024

e: hello@blackgracecowley.com | **w:** blackgracecowley.com | **t:** +44 (0) 1624 645555

a: 51 Victoria Street, DOUGLAS, Isle of Man, IM1 2LD



PROPERTY DETAILS FOR

Apartment 53, Queens Apartments, Queens Promenade, Douglas

Disclaimer

These particulars are for information purposes only and do not constitute or form any contract nor should any statement contained herein be relied upon as a representation of fact.

Neither the vendor nor Black Grace Cowley (the firm), nor any officer or employee of the firm accept liability or responsibility for any statement contained herein.

The vendor does not by these particulars, nor does the firm, nor does any officer or any employee of the firm have any authority to make or give any representation or warranty whatsoever as regards the property or otherwise. It is the sole responsibility of any person interested in the property described in these particulars to make all proper enquiries and searches to verify the description of the property and all other particulars herein.

e: hello@blackgracecowley.com | **w:** blackgracecowley.com | **t:** +44 (0) 1624 645555

a: 51 Victoria Street, DOUGLAS, Isle of Man, IM1 2LD