

# FOR SALE



**FORMER WORKSHOP/LOCK-UP STORE AND YARD – OIRO £225,000 excl.**

## 2 Atholl Street, Peel



- Great opportunity to purchase the freehold of this former workshop/lock-up store and yard, in a prominent corner position in the heart of Peel Town Centre.
- Possible opportunity to convert into other uses/residential, STPP.
- Available on completion of all legal formalities.
- THE OWNER MAY CONSIDER LEASING THE SITE.

Over/...

## DESCRIPTION

Fabulous opportunity to purchase this former workshop/lock-up store and large yard, in the heart of Peel Town Centre. The building is in need of renovation.

## LOCATION

Travelling into Peel on the main A1 Road from St.Johns, continue down Tynwald Street and take the second turning on the right-hand side onto Atholl Street, where the property can be found directly on the corner.

## TENURE

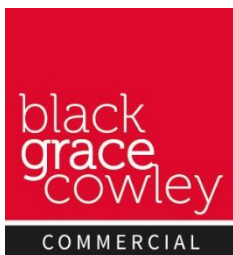
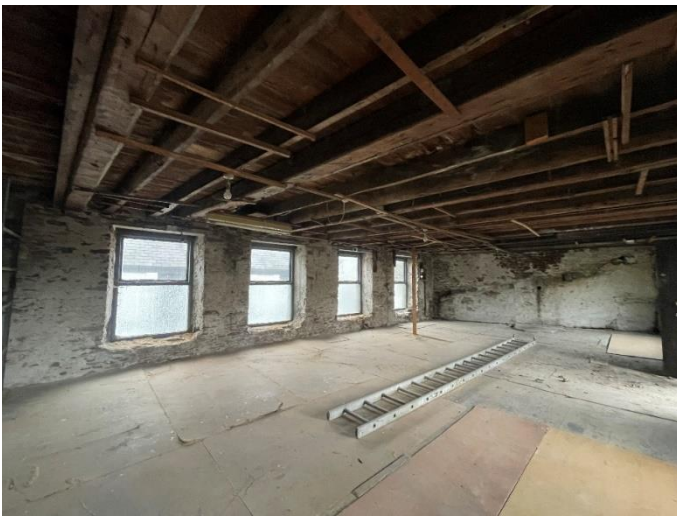
Vacant possession on completion of legal formalities.

## LEGAL FEES

Each party to pay their own legal fees.

## VIEWING

Strictly by appointment through **Black Grace Cowley**.



**Sharon Gelling**  
Commercial Department  
**01624 645550**  
[sharon@blackgracecowley.com](mailto:sharon@blackgracecowley.com)  
**Ben Quayle**  
Commercial Department  
**01624 645550**  
[ben@blackgracecowley.com](mailto:ben@blackgracecowley.com)

### Black Grace Cowley Limited

Details of Black Grace Cowley can be viewed on our website [blackgracecowley.com](http://blackgracecowley.com)

This document is for general informative purposes only. The information in it is believed to be correct, but no express or implied representation or warranty is made by Black Grace Cowley as to its accuracy or completeness, and the opinions in it constitute our judgement as of this date but are subject to change. Reliance should not be placed upon the information, forecasts and opinions set out herein for the purpose of any particular transaction, and no responsibility or liability, whether in negligence or otherwise, is accepted by Black Grace Cowley or by any of its directors, officers, employees, agents or representatives for any direct, indirect or consequential loss or damage which may result from any such reliance or other use thereof. All rights reserved. No part of this publication may be transmitted or reproduced in any material form by any means, electronic, recording, mechanical, photocopying or otherwise, or stored in any information storage or retrieval system of any nature, without the prior written permission of the copyright holder, except in accordance with the provisions of the Copyright Designs and Patents Act 1988. Warning: the doing of an unauthorised act in relation to a copyright work may result in both a civil claim for damages and criminal prosecution.