



ASKING PRICE

£1,795,000

THE DETAILS



4



4



3



66 Groudle Road

Onchan

£1,795,000

call in today or visit www.blackgracecowley.com for more details

e: hello@blackgracecowley.com | w: blackgracecowley.com | t: +44 (0) 1624 645555

a: 51 Victoria Street, DOUGLAS, Isle of Man, IM1 2LD

PROPERTY DETAILS FOR
66 Groudle Road, Onchan



PROPERTY DETAILS FOR
66 Groudle Road, Onchan



PROPERTY DETAILS FOR
66 Groudle Road, Onchan



PROPERTY DETAILS FOR
66 Groudle Road, Onchan



PROPERTY DETAILS FOR
66 Groudle Road, Onchan



PROPERTY DETAILS FOR
66 Groudle Road, Onchan





PROPERTY DETAILS FOR

66 Groudle Road, Onchan

THE DESCRIPTION

- Stunning 4,000 sq.ft contemporary home in Onchan
- Enjoying uninterrupted panoramic views over Groudle Glen and surrounding countryside
- Bespoke Laura Ashley Kitchen and Utility Room
- Living Room with Balcony, Dining Room and Cinema Room
- 4 Double En-suite Bedrooms, both the Master and 2nd Bedroom are complimented by walk-in Dressing Rooms
- Set within 1 Acre of secluded landscaped gardens with a private entertaining area and hot tub
- Gated Entrance, Double Garage and parking for several cars
- Underfloor heating throughout, Solar Panels, Oil Fired Central heating, Double Glazed
- External store room
- Viewings highly recommended

THE PROPERTY

Black Grace Cowley are delighted to present this stunning 4,000 sq.ft contemporary home in Onchan. With Glen walks on your doorstep, stunning rural views and local amenities and schools in close proximity, 66 Groudle Road truly offers the best of Isle of Man Living.

The property is approached via electric gates with a block paved driveway sweeping down towards the property's double garage and attractive entrance. Upon entering the property there is a spacious, inviting entrance hall which provides access to the large triple aspect formal lounge with a private balcony and stunning west facing rural views. There is a private home office, a family cinema room & cloakroom WC. An open plan dining room overlooking the Glen provides access into the hand built Laura Ashley kitchen which includes high end, integrated appliances and a large stone topped Island providing a breakfast area with views to Snaefell. From the kitchen there is a large utility with matching hand built cabinets and integral access to the double garage.

A light, modern turning staircase leads to a spacious landing with generous walk in storage areas. Situated on the South West side of the property, the master suite is bright and spacious offering a large walk in wardrobe and contemporary en-suite bathroom. In addition to the master suite, bedroom 2 also offers a walk in wardrobe and large en-suite bathroom. There are 2 further en-suite double bedrooms both extremely generous in size.

e: hello@blackgracecowley.com | **w:** blackgracecowley.com | **t:** +44 (0) 1624 645555

a: 51 Victoria Street, DOUGLAS, Isle of Man, IM1 2LD



PROPERTY DETAILS FOR

66 Groudle Road, Onchan

The mature, landscaped gardens extend to approximately 1 acre, there is an outside bar and entertainment area, complete with a hot tub and private sun terraces. The grounds and the property itself offer spectacular West facing rural views across the Glen and towards Snaefell, which can be enjoyed from all aspects of house and grounds.

This beautifully modernised home is located within walking distance of King Edward Bay golf Club, The Kings Spa and Groudle Beach and just a short distance from The Village Onchan & Douglas Town Centre.

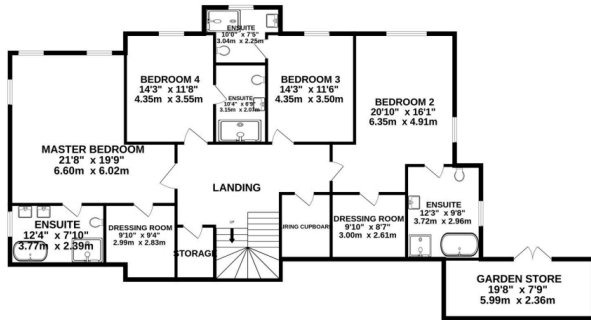
Call Black Grace Cowley to organise a viewing on 01624 645555

e: hello@blackgracecowley.com | **w:** blackgracecowley.com | **t:** +44 (0) 1624 645555

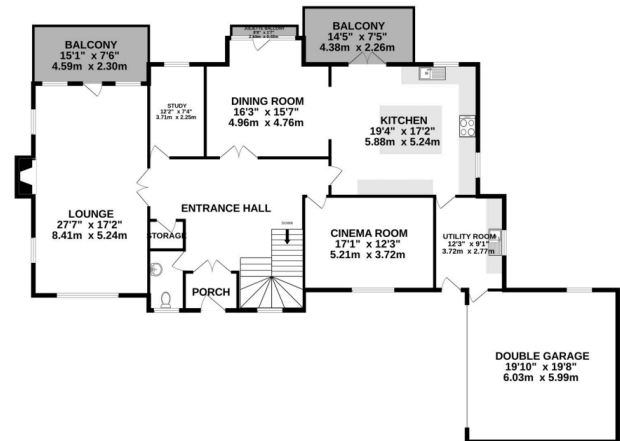
a: 51 Victoria Street, DOUGLAS, Isle of Man, IM1 2LD

FLOORPLAN

LOWER GROUND FLOOR
1961 sq.ft. (182.2 sq.m.) approx.



GROUND FLOOR
2199 sq.ft. (204.3 sq.m.) approx.



TOTAL FLOOR AREA: 4160 sq.ft. (386.5 sq.m.) approx.

Whilst every attempt has been made to ensure the accuracy of the floorplan contained here, measurements of doors, windows, rooms and any other items are approximate and no responsibility is taken for any error, omission or mis-statement. This plan is for illustrative purposes only and should be used as such by any prospective purchaser. The services, systems and appliances shown have not been tested and no guarantee as to their operability or efficiency can be given.
Made with Metropix ©2025



PROPERTY DETAILS FOR

66 Groudle Road, Onchan

Disclaimer

These particulars are for information purposes only and do not constitute or form any contract nor should any statement contained herein be relied upon as a representation of fact.

Neither the vendor nor Black Grace Cowley (the firm), nor any officer or employee of the firm accept liability or responsibility for any statement contained herein.

The vendor does not by these particulars, nor does the firm, nor does any officer or any employee of the firm have any authority to make or give any representation or warranty whatsoever as regards the property or otherwise. It is the sole responsibility of any person interested in the property described in these particulars to make all proper enquiries and searches to verify the description of the property and all other particulars herein.

e: hello@blackgracecowley.com | **w:** blackgracecowley.com | **t:** +44 (0) 1624 645555

a: 51 Victoria Street, DOUGLAS, Isle of Man, IM1 2LD